

PIVOTA® Fully Concealed & Adjustable Hinge

PIVOTA® DX 120 3D "33mm" EXTENDED THROW



Hinge Description

Pivota Fully Concealed and adjustable hinge, suitable for use on non-rebated flush doors. Extended throw allows for cladding of up to 9mm on the face of the Door & Frame, suitable for use on Timber, Steel and Aluminium Door Systems, complete with Cover Plates.

PIVOTA®
/B/a/S/y/s/
Bartels Systembeschläge GmbH

Technical Details

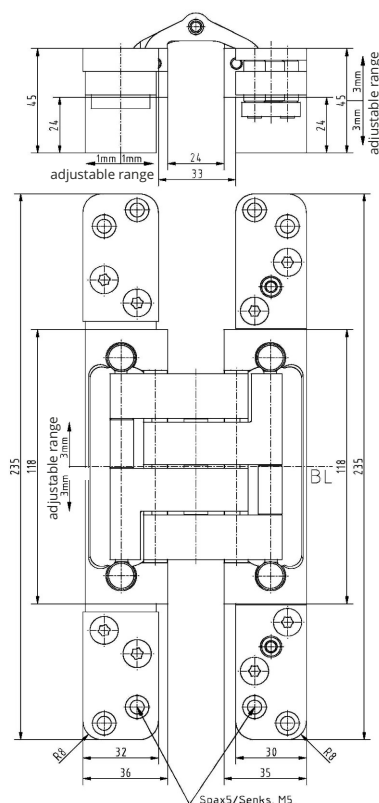
Load Capacity	150 kg (per pair)
Overall Length (Door / Frame)	235mm
Overall Width (Door / Frame)	35mm / 32mm
Maximum Opening Angle	180 °
Minimum Door Thickness	44mm
Adjustability	3 Dimensional (Side, Height, Compression)

Available Accessories

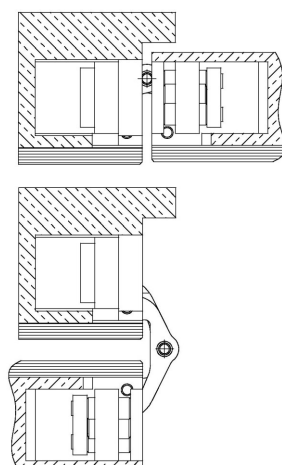
Receiver Plate for Steel Frame
Hinge Retainer Plate for Casing and Steel Frames

Installation Accessories

Universal Routing Kit
Router Template (2 Part Door & Frame)



Section drawing



PRODUCT CODE:
Pivota DX120 3D "33mm"

MIN DOOR THICKNESS:
44 mm

MAX ADJUSTABLE DOOR WEIGHT:
150 kg (per pair)

FR DETAIL:
NON FIRE RATED

Standard finishes available

Code	Finish
SNP	Satin Nickel
SSS	Simulated Stainless

Full range of decorative finishes available

